

# What's the Scoop on Your Health?

November 2024 - Newsletter

**the corner**  
HEALTH CENTER



The mission of the Corner Health Center is to inspire 12-25-year-olds (and their children) to achieve and sustain healthy lives by providing judgement-free, affordable health and wellness care and education.

We offer physical health, behavioral health services, health education and youth development programs designed for teens, young adults and their children.

**For more information, visit [www.cornerhealth.org](http://www.cornerhealth.org) or call 734-484-3600 for an appointment.**

The Corner Health Center

[www.cornerhealth.org](http://www.cornerhealth.org)

47 N. Huron St

## Hours

Mon. 9 a.m. - 5 p.m.

Tues. 9 a.m. - 6 p.m.

Wed. 1 - 5 p.m.

Thurs. 9 a.m. - 5 p.m.

Fri. 9 a.m. - 5 p.m.

## Features & Highlights

P.2 - November is...

P.3 - Programming

P.4 - We're Hiring!

P.5 - Corner News

P.6 - Get Involved!

P.7 - Medicaid Info

P.8 - Make an Impact!

P.9 - Community Board



SUBSCRIBE

## FOLLOW US!

@TheCornerHealth 

@CornerHealthCenter 

cornerhealth.org 





Hate has no home at The Corner Health Center. Our emphasis on judgment-free care for young people is more important than ever, especially considering the winning presidential candidate's

language and actions vilifying some of our society's most vulnerable and marginalized communities. People of color, the LGBTQ+ community, and adolescents will always be safe at The Corner.

Young people are looking to us and waiting to see how we will handle the coming days, weeks, and months. As both our 'future' and our 'now,' we owe it to them to face this moment with courage. As an organization founded on principles of reproductive freedom and healthcare access for all who need it, The Corner's work advancing health, hope, and wholeness will remain as strong as ever.

A handwritten signature in black ink that reads "Alex Plum".

Alex Plum, MPH, MBA  
Executive Director

A handwritten signature in black ink that reads "Pat Wells".

Pat Wells, MD  
Medical Director



## November is Native American Heritage Month

We at The Corner celebrate and honor Native American Heritage Month! According to the City of Ypsilanti, Ypsilanti is located where an old Native American trail crossed the Huron River. Long before the coming of the white man, it was the camping and burial ground for several Native American tribes. [Learn more!](#)

## Women's Health Care (Gynecology) for Teens & Young Adults with Disabilities

October is National Disability Awareness month. The Corner has highly-skilled clinicians and staff trained to work alongside people with disabilities and an accessible building including equipment and a sensory space designed to meet different needs!

**Scan the QR code to find out more  
about this new, exciting service!**



## THEATRE TROUPE & YLC ARE BACK!

Caught the acting bug? Join our Theatre Troupe! It's a great way to explore drama & learn more about different health topics. The Youth Leadership Council (YLC) creates programs and advises The Corner about the needs of young people in our community!

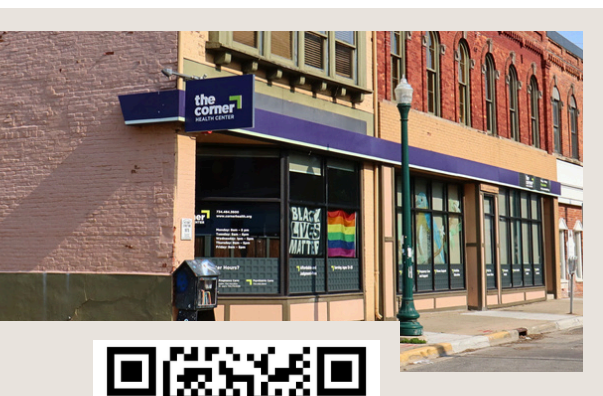
### \$tipend included!



@TheCornerHealth 

@CornerHealthCenter   

## JOIN PATIENT FAMILY ADVISORY COUNCIL!



PFAC is a board of members who help ensure that all of our programs, policies and services are relevant to the patients we serve. Members are patients, parents of patients, staff and community members who are willing to join.

**SCAN:** QR code.

**CALL:** Ashley Anderson at 734-714-2228

**EMAIL:** [aanderson@cornerhealth.org](mailto:aanderson@cornerhealth.org)

**RETURN:** Fill out & return interest card to front desk

# the corner HEALTH CENTER

The Scoop - p.4

November 2024



JOIN  
OUR  
TEAM



**WE'RE HIRING!**



the corner  
HEALTH CENTER

## Refill Reminders!

Call Corner when you have **one week** of meds left  
734-484-3600 option 4

Leave a message with your:

1. Name
2. Date of birth
3. Medication you need
4. Pharmacy you want
5. Call back number



It can take **2-3 business days** to complete refills  
Thank you - Your Corner Team

## Schedule Your Next Appointment

Call us to schedule your appointment! Same-day and walk-in appointments are available most days. Masks are available as needed and they are required in the building. If you need to cancel or reschedule, please call!

 734.484.3600

# Corner News

## We Offer Spanish Interpreters to Our Patients!

In pursuit of breaking barriers to health and wellness care for young people, The Corner Health Center is proud to announce its partnership with Mexiquenses Unidos en Michigan to provide Spanish interpreters to our Spanish-speaking patients, Oct. 16.



## The Corner Receives Behavioral Health Grant via Michigan Health Endowment Fund

The Corner's YouthWell Initiative aims to provide tailored educational materials, therapy sessions, and peer support networks that empower young people to manage their mental health.

## The Corner Partners with MDHHS For New School-Based Health Initiative

The Corner Health Center announced its new School Wellness Program (SWP). The Corner also revealed the existing Expanding, Enhancing Emotional Health (E3) program will be transitioning to W.A.V.E. (Washtenaw Alliance for Virtual Education). [LEARN MORE!](#)



## Scan to Stay Locked In on All News About The Corner!



# the corner

HEALTH CENTER

The Scoop - p.6

November 2024



## GET INVOLVED



SCAN TO SEE OUR  
EVENTS CALENDAR



# SELF-SCHEDULING IS HERE!

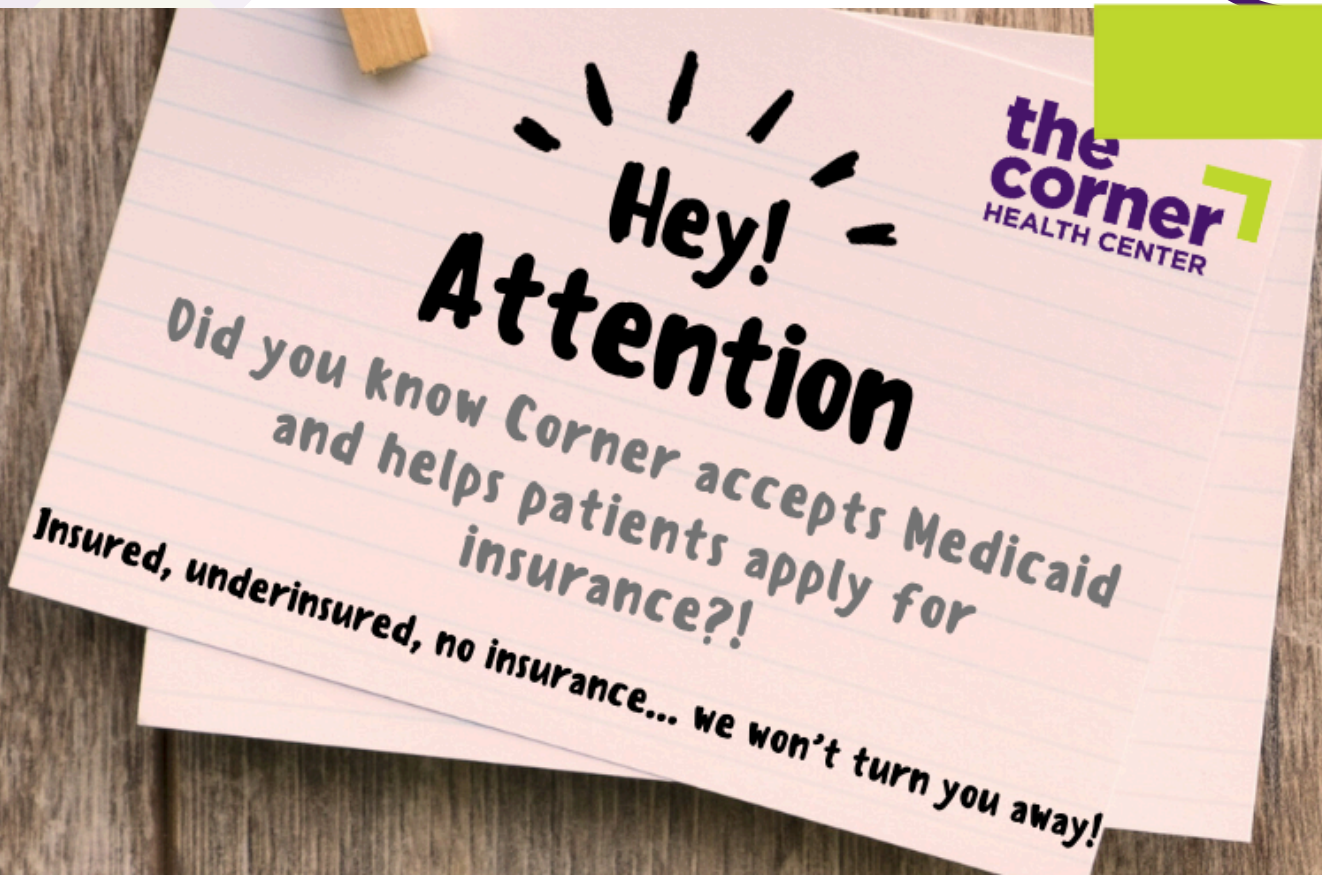
LEARN MORE ABOUT HOW YOU CAN  
SCHEDULE YOUR APPOINTMENTS!



## Schedule Your Next Appointment

Call **734-484-3600**! Same-day and walk-in appointments are available most days. Masks are available as needed and they are required in the building. If you need to cancel or reschedule, please call!

[Visit our website!](#)





## The Corner's Lotus Society

When you arrange a bequest through your will or estate, you create support that allows the Corner to respond to future health needs of our youth. You will help future generations of young people grow to be healthy adults. For more info, contact our Development team at 734-714-2235 or [development@cornerhealth.org](mailto:development@cornerhealth.org), or **scan the QR code**.



# HYS

Healthy Youth Sustainer

the corner  
HEALTH CENTER



## Become a Healthy Youth Sustainer!

This monthly giving society helps ensure that young people ages 12- to 25-years-old (and their children) have ongoing access to comprehensive, integrated health and wellness care services!

Just one cup of coffee a month can make a huge impact on someone's life...

## Donate to the Corner!

Your gift today helps young people and their children access quality, confidential, affordable, and judgment-free health care services regardless of their insurance status or ability to pay.



# COMMUNITY BOARD


**DEC 2ND** SURE MOMS

WCC Morris Lawrence Building  
9:00 a.m. - 2:00 p.m.

WALKER COUNTY HISTORICAL SOCIETY 1820

Wanderluxe Community College


SAFELYHOUSE



**2ND ANNUAL WOMEN'S DAY CELEBRATION: FOR THE SURVIVORS**

Free Entry  
Lunch Provided

CLICK THIS LINK TO REGISTER



**the corner HEALTH CENTER**

BELOW THE CORNER

**AFTER SCHOOL HANG OUT**

REGISTER



**Tutoring (Math/English)**  
Tuesdays 3-6pm  
**GAMING CLUB**  
Thursdays 3-5pm

Access to all our services!

47 N. Huron St. Ypsilanti, 48197

Tutoring, video games, crafts, games, and snacks!

More info @cornerhealthcenter

**A2-ADVANCE**

9th Annual Winter Clothing Drive  
11/4 - 11/22

Benefiting The House by the Side of the Road & The Corner Health Center



**5 WAYS TO GIVE**

**New Items** Gently Used or New Drop Off Locations

- 1 U-M Loading Docks: NCRB-2800 Plymouth Rd Dock 90 MSRB-1150 W. Medical Ctr Dr Dock 6
- 2 2142 Ann Arbor Campus
- 3 U-M Arbor Lakes, Bldg 2&3 near kitchens
- 4 Rudolf Steiner School (both campuses)

Thank You to Our 2024 Collaborating Partners!

- Ann Arbor National Black Nurses Association
- BMC2
- Catalytic Air & Media
- Center for Healthcare Outcomes & Policy
- Conspiral Heart Center
- Frankel Cardiovascular Center
- Institute for Healthcare Policy and Innovation
- Medical School Facilities
- Michigan Integrated Center for Health Analytics, Prediction
- Michigan Medicine, Anesthesiology
- Michigan Medicine, Communications
- Michigan Medicine, Community Health Center
- Michigan Medicine, East AA & Geriatrics Center
- Michigan Medicine, East Medical Campus
- Michigan Medicine, Family Medicine
- Michigan Medicine, Nursing
- Michigan Medicine, UMED Ambulatory Care
- Michigan Society of Thoracic and Cardiovascular Surgeons Quality Collaborative
- Regal Cancer Center
- Rudolf Steiner School of Ann Arbor
- 2142 Community Church

@a2.advance  
A2Advancemed.umich.edu

Questions?  
Donald Likosky  
likosky@med.umich.edu



**SUBSCRIBE**

**FOLLOW US!**

@TheCornerHealth 

@CornerHealthCenter    

cornerhealth.org 

